



Key Dates for Parents/Carers

Monday 16th – Friday 20th November: Anti-Bullying Week

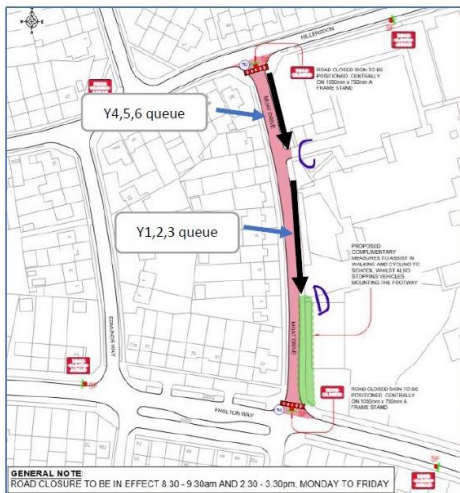
Important Information

Dear Parents & Carers,

A warm welcome back to all our families. I hope you all had a restful break. Despite the rain, we have had a superb Autumn full of splendid colours and sounds. I have already seen some of the art work pupils have brought in and it looks great. Please make sure the pupils all complete the homework and bring it to school this week.

We have new entrance and exit procedures in place, these were emailed to you before half term and I have included it in this newsletter also. We have implemented our 'School Street' temporary road closure along Moat Drive (please see maps below). The pink line indicates the closed road, the blockades are marked at each end. Year 1 will also use Moat Drive rather than the Barn. Reception will remain in the Barn with the same timing: 9.00am – 9.10am and 3.00pm – 3.10pm. Nursery timings will remain the same.

Morning drop off



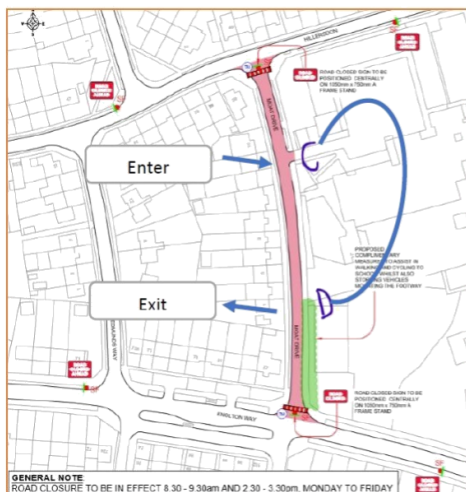
In the morning between 8.30am and 8.45am pupils in:

Year 4, 5 and 6 will enter through gate C

Years 1, 2 and 3 will enter through gate D

Parent ***WILL NOT*** enter the playground. Parents must social distance while queuing and walk on the other side of the road when leaving to avoid unnecessary crossover.

Afternoon pick up



In the afternoon the new Schule will be:

Years 4,5 and 6 will finish at 3.10pm

Years 1,2 and 3 will finish at 3.15pm

The gates will lock at 3.30pm

Parents will enter through gate C and exit through gate D.

Parents **MUST NOT** stop to talk to teachers during pick up. This must be done through TEAMS or by phone call to the office.

Parents must wear a mask and social distance while queuing and walk on the other side of the road when leaving to avoid unnecessary crossover.



Please could you familiarise yourselves with the new procedure, it is hard to keep repeating the same instruction while managing the queues. Despite it being quite blustery this morning, I think it went quite well. We are still waiting for the barriers but Moat Drive was certainly safer. I do think the Council need to implement a zebra crossing on Knolton Way, which I will ask for.

In preparation for tomorrow, could you ensure you child/children are holding their own belongings. Kisses and cuddles (important as they are) should happen before they get to the gate. This will enable a flow of movement.

In addition, there is to be NO queue jumping, instead you will be directed to line up. At home time to avoid bunching, Parents/Carers will be asked to follow a loop on the playground and wear masks. Remember, it is only one adult on site per family, secondary pupils are classed as an additional adult in this case and must wait outside. Thank you for your co-operation.

Lockdown Announcement

The National Lockdown will come into force on Thursday, with schools remaining open. I think it is highly unlikely that schools will be asked to close but if we are I want to assure parents that we will go straight back into remote learning. This will take place through TEAMS, and will follow a similar timetable to the school day. We have spent time improving our provision further and therefore feel confident that we can deliver good quality online teaching. For now, it is business as usual.

TEAMS

As I mention TEAMS, a reminder that contacting teachers must be done at the agreed times 3.00pm - 4.30pm and **NOT** over the weekend or half term. The first term was exhausting therefore staff deserve an uninterrupted break. Parents who continue to do this will be banned.

Free School Meal Vouchers

Slough Borough Council announced on Friday, that they will be supplying families with vouchers for half term. These can be claimed until the end of this week, please follow the instructions on the email, sent to you this morning.

Uniform PE kit

A number of children were in the wrong PE kit today, please can you ensure they are in the correct uniform and footwear. Teachers will be clamping down on this.

Finally, if anything changes we will inform you by email. Please ensure you check your email, especially on Mondays. If you all remind each other than hopefully we will all stay in the loop.

Many thanks,

Navroop Mehat



Awards & Honours



STARS OF THE WEEK

| NURSERY | MORNING NURSERY Meet | | AFTERNOON NURSERY Joseph |
|---------|-------------------------|---------------------|-----------------------------|
| | RECEPTION | ENGLAND Romeo | WALES Sheena |
| YEAR 1 | AUSTRALIA Aaizah | TONGA Eesa | FIJI Gursehaj |
| YEAR 2 | CANADA Jonah | JAMAICA Wadiha | MEXICO Javairea |
| YEAR 3 | ECUADOR Deetya | PERU Aliza | CHILE Abdullah |
| YEAR 4 | MOZAMBIQUE Abeer | TANZANIA Khadija | MOROCCO |
| YEAR 5 | HUNGARY Saim | FRANCE Jenson | ITALY Eldrich |
| YEAR 6 | THAILAND Mahria | CHINA Lewis | NEPAL Zakariya |



MATHLETICS

| | | |
|--------------|-----------|--|
| 1st PLACE | Australia | |
| | Morocco | |
| 3rd PLACE | Tonga | |
| | Jamaica | |





HOUSE POINTS THIS WEEK



| House Name | Points | Ranking |
|----------------|--------|-----------------|
| Copper Beech | 1536 | 3 rd |
| Horse Chestnut | 1260 | 4 th |
| Majestic Oak | 1589 | 2 nd |
| Sycamore | 1596 | 1 st |



HOUSE POINTS TERM WINNER...



SYCAMORE

Children in the Sycamore team were treated to popcorn & watched a Mr Bean movie.

WHAT COULD NEXT TERMS TREAT BE???



Key Messages & Reminders

Just so you don't forget...

School lunches - drinks

A reminder to all Parent/Carers that drinks are not included in the school lunch price (£2.05). Drinks are an additional cost - this also includes the free School lunches. Below we have outlined the extra costs for drinks:

Apple/Orange Juice - 30p

Milk/Milkshake - 60p

Water Bottle - 60p

Bonfire Lunch

On Thursday 5th November we will be having a special 'Bonfire' lunch to celebrate Bonfire night. Check out the menu below!

School Radio

The School Radio is back!!! Be sure to check it out by clicking the 'School Radio' tab which is located on the homepage on the School website. This link will lead you directly to the School Radio station where you can tune in to all the great work the children have been doing.

Collecting Children

Thank you for a successful first day, dropping and collecting your children. When collecting your children can you please line up on the sides for your allocated year group - all entering from gate C. Can you please cross the road once you have collected your children.



BONFIRE MENU

5th November 2020

Chicken Sausage Hot Dog

Served with Chips

Halal Chicken Sausage Hot Dog

Served with Chips

Veggie Hot Dog

Served with Chips

Jacket Potato

with Cheese, Beans or Tuna

Sparkling Surprise



Uniform Checks

PE uniform should be in line with the uniform list and checks will take place after half term. Please ensure that your child/children are wearing the correct PE Kit...please refer to the below images to see what the correct PE Kit is for children. Moreover, please make sure that children are tucking in their shirts. Please refer to the uniform list.



Wexham Court Primary School Uniform



The school uniform can be purchased from Diffusion, 104-105 Queensmere Shopping Centre

| Sweatshirt |
|---|
| Children should wear the school sweatshirt which is blue with our yellow emblem. No fleeces should be worn as the classrooms are sufficiently warm. |
| Shirts |
| Yellow polo shirts only |
| Skirts and Trousers |
| <p>Winter uniform: smart, plain grey trousers, skirts or pinafores should be worn by boys or girls. Skirts should be of a reasonable length. Black leggings or tights may be worn under skirts</p> <p>Summer uniform: blue and white checked pinafores or grey shorts</p> |
| Shoes |
| Shoes should be smart, plain black and have a sensible heel height for moving around the school Trainers are not to be worn in school except for PE or non-uniform days |
| PE Kit |
| Plain white T-shirt or polo shirt. Blue shorts, tracksuit bottoms or leggings. Plimsolls or trainers |
| Jewellery |
| No jewellery is to be worn except of a pair of stud earrings or religious items, which must be removed or covered on PE days |

*From all the staff here at Wexham Court Primary School,
we hope you have a great week ahead!*